



Journal of Optometry

www.journalofoptometry.org



REVIEW

A systematic review of controlled trials on visual stress using Intuitive Overlays or the Intuitive Colorimeter

Bruce J.W. Evans^{a,*}, Peter M. Allen^b

^a Institute of Optometry, London, UK

^b Department of Vision and Hearing Sciences and Vision and Eye Research Unit, Anglia Ruskin University, Cambridge, UK

Received 16 February 2016; accepted 3 April 2016

KEYWORDS

Visual stress;
Coloured overlays;
Colorimeter;
Review

Abstract Claims that coloured filters aid reading date back 200 years and remain controversial. Some claims, for example, that more than 10% of the general population and 50% of people with dyslexia would benefit from coloured filters lack sound evidence and face validity. Publications with such claims typically cite research using methods that have not been described in the scientific literature and lack a sound aetiological framework.

Notwithstanding these criticisms, some researchers have used more rigorous selection criteria and methods of prescribing coloured filters that were developed at a UK Medical Research Council unit and which have been fully described in the scientific literature. We review this research and disconfirm many of the more extreme claims surrounding this topic. This literature indicates that a minority subset of dyslexics (circa 20%) may have a condition described as visual stress which most likely results from a hyperexcitability of the visual cortex. Visual stress is characterised by symptoms of visual perceptual distortions, headaches, and eyestrain when viewing repetitive patterns, including lines of text. This review indicates that visual stress is distinct from, although sometimes co-occurs with, dyslexia. Individually prescribed coloured filters have been shown to improve reading performance in people with visual stress, but are unlikely to influence the phonological and memory deficits associated with dyslexia and therefore are not a treatment for dyslexia.

This review concludes that larger and rigorous randomised controlled trials of interventions for visual stress are required. Improvements in the diagnosis of the condition are also a priority. © 2016 Published by Elsevier España, S.L.U. on behalf of Spanish General Council of Optometry. This is an open access article under the CC BY-NC-ND license (<http://creativecommons.org/licenses/by-nc-nd/4.0/>).

Abbreviations: IO, intuitive overlay; IC, intuitive colorimeter; PGT, pattern glare test; PRVS, pattern related visual stress; RCT, randomised controlled trial; VS, visual stress; WRRT, Wilkins Rate of Reading Test.

* Corresponding author at: Institute of Optometry, 56-62 Newington Causeway, London SE1 6DS, UK.
E-mail address: admin@ioo.org.uk (B.J.W. Evans).

<http://dx.doi.org/10.1016/j.optom.2016.04.002>

1888-4296/© 2016 Published by Elsevier España, S.L.U. on behalf of Spanish General Council of Optometry. This is an open access article under the CC BY-NC-ND license (<http://creativecommons.org/licenses/by-nc-nd/4.0/>).

Please cite this article in press as: Evans BJW, Allen PM. A systematic review of controlled trials on visual stress using Intuitive Overlays or the Intuitive Colorimeter. *J Optom.* (2016), <http://dx.doi.org/10.1016/j.optom.2016.04.002>

PALABRAS CLAVE

Estrés visual;
Filtros coloreados;
Colorímetro;
Revisión

Revisión sistemática de los ensayos controlados sobre estrés visual utilizando filtros intuitivos o colorímetros

Resumen Las aseveraciones acerca de que los filtros coloreados ayudan a la lectura se remontan 200 años atrás, y siguen siendo controvertidas. Por ejemplo, algunas afirmaciones relativas a que el 10% de la población general y el 50% de las personas disléxicas podrían beneficiarse de los filtros coloreados carecen de evidencia y de validez firmes. Las publicaciones que incluyen dichas afirmaciones citan, normalmente, investigaciones que hacen uso de métodos no descritos en la literatura científica y que carecen de marcos etiológicos sólidos.

A pesar de estas críticas, algunos investigadores han utilizado unos criterios y métodos de selección más rigurosos para la prescripción de filtros coloreados, desarrollados en una unidad del Medical Research Council del Reino Unido y que se han descrito cuidadosamente en la literatura científica. Revisamos todas estas investigaciones que desmienten muchas de las aseveraciones más extremas que rodean a esta cuestión. Esta literatura científica consistente indica que un subgrupo minoritario de disléxicos (de alrededor del 20%) puede padecer una afección médica descrita como estrés visual, que deriva muy probablemente de la hiperexcitabilidad de la corteza visual. El estrés visual se caracteriza por síntomas de distorsión de la percepción visual, cefaleas, y fatiga visual al visualizar patrones repetitivos, incluyendo las líneas de texto. Esta revisión indica que el estrés visual es diferente a la dislexia, aunque a veces coexisten ambas situaciones. Se ha demostrado que los filtros coloreados individualmente prescritos mejoran el desempeño lector en personas con estrés visual, pero es improbable que mejoren los déficits fonológicos y de memoria que se asocian a la dislexia, por lo que no constituyen un tratamiento para la misma.

Esta revisión concluye que se precisan más ensayos controlados y aleatorizados sobre intervenciones para el estrés visual. También son prioritarias las mejoras diagnósticas de dicha afección.

© 2016 Publicado por Elsevier España, S.L.U. en nombre de Spanish General Council of Optometry. Este es un artículo Open Access bajo la licencia CC BY-NC-ND (<http://creativecommons.org/licenses/by-nc-nd/4.0/>).

Introduction

Claims that coloured filters ease eyestrain when reading originate from the 1780s,¹ and in 1964 Critchley described a dyslexic child who could only read on coloured paper.² Meares described a cluster of symptoms³ of perceptual distortion when reading and Irlen claimed the distortions were common and were reduced by her individually prescribed coloured filters⁴; claims that remain controversial.^{5,6} Previous reviews of this condition, often now called visual stress (VS), have reached discrepant conclusions.^{5,7} VS is characterised by symptoms of asthenopia and visual perceptual distortions when observing striped patterns, including lines of text.⁸ This field lacks large randomised controlled trials of the type that would be required for the validation of new drugs. This situation is somewhat analogous to that faced recently by authors reviewing treatments for intermittent exotropia⁹: a recent Cochrane review (on intermittent exotropia) was unhelpful because it had only found one appropriate study. These authors dealt with this dilemma in a pragmatic way, by carrying out a review of the best available evidence.⁹ The present authors have adopted a similar pragmatic approach to review the best available evidence for treatments of visual stress.

The initial approach for the treatment of visual stress, developed by Irlen, has been criticised because the system has not been fully described in the scientific literature,¹⁰ does not systematically sample colour space,^{11,12} and is not

typically administered by eyecare professionals. A newer system using "Intuitive overlays" (IO), the "Intuitive colorimeter" (IC), and Cerium Precision Tinted Lenses was developed by Wilkins at the UK Medical Research Council (MRC) Applied Psychology Unit. This system is fully described in the scientific literature,^{11,13,14} systematically and efficiently samples colour space,^{11,13} and has been shown to have the properties required for an appropriate method.¹⁴⁻¹⁷ This system is used by eyecare professionals which is important clinically to ensure that symptoms due to ophthalmic conditions are alleviated before colour is used.^{18,19} For these reasons, this paper reviews evidence from research using the Wilkins (MRC) system.

The condition that is purportedly helped by coloured filters has been given various names,²⁰ most recently visual stress²¹ or pattern related visual stress (PRVS).²² Visual stress has other meanings,²³⁻²⁵ but as noted below in the discussion most studies in this field to date are likely to have included a heterogeneous sample. PRVS relates the condition to the likely aetiology²⁶ and PRVS may be the most appropriate term for studies that include a pattern glare test, although at present this is only a minority of studies. For the present review the widely used term visual stress will be used. Intuitive overlays¹¹ are sheets of coloured plastic placed on the page and in this review Precision Tinted Lenses describes coloured lenses prescribed with the IC.¹³ The term coloured filters is used generically to describe intuitive overlays and Precision Tinted Lenses prescribed with the IC.

The prevalent view on the aetiology of VS is that the striped patterns caused by text²⁷ over-stimulate a hyper-excitabile visual cortex.²⁸ It is hypothesised that by altering the spectral composition of the retinal image with coloured filters, cortical activity²⁹ can be rearranged so as to avoid strong local excitation in hyperexcitable orientation columns of the visual cortex.³⁰ Research continues investigating this hypothesis and the nature of visual discomfort has been^{31–40} the topic of a recent review.²⁶

Reading difficulties, dyslexia, and VS

A comprehensive review (the Rose report) defined dyslexia as a learning difficulty that primarily affects the skills involved in accurate and fluent word reading and spelling with characteristic features of difficulties in phonological awareness, verbal memory and verbal processing speed.⁴¹ These non-visual factors are likely to be causes of the poor reading. The report acknowledges that sensory or motor co-ordination difficulties can occur alongside dyslexia and includes VS among these conditions, but stresses that there is no evidence of a causal link between VS and dyslexia. This is also the conclusion of the present review: VS may contribute to the overall difficulties that a dyslexic child experiences in the classroom but is unlikely to be a cause of dyslexia. It is therefore not appropriate for eyecare practitioners or others dispensing coloured filters to claim that they can treat dyslexia.

The Rose report indicates that VS co-occurs with dyslexia and the two studies that investigate this hypothesis find a higher prevalence of VS in dyslexia than in good readers.^{42,43} In both studies, the statistical significance was marginal. A third concordant study (also lacking statistical power) indicates that VS is more likely to be problematic when it co-occurs with dyslexia.⁴⁴ It is clear from the literature that most people with dyslexia do not have VS (see next section) and therefore studies investigating the effect of coloured filters on samples selected as having dyslexia⁴⁵ suffer from selection bias and will be underpowered. It is perhaps surprising that not all studies of VS have studied people with VS^{45,46} and reviews that fail to make the differentiation between dyslexia and VS are likely to reach invalid conclusions.

Diagnosis of VS

VS is suspected when people report symptoms of visual perceptual distortions, eyestrain, or headaches during reading. Four approaches have been used to detect VS:

1. Questionnaire-based rating scales.^{39,44,47}
2. Pattern glare test (PGT),^{22,48–50}
3. Sustained voluntary use of IO.^{12,51,52}
4. Improvement in reading (typically, with Wilkins Rate of Reading Test; WRRT)^{53,54} or task performance^{22,43} with IO.

An additional criterion is to exclude patients with an ophthalmic problem that may account for their symptoms. Although important for clinical practice, this approach is not always adopted in research studies but is unlikely to

be a significant confounder because ophthalmic factors are infrequent correlates of VS.^{8,55–57}

Early research confirmed anecdotal observations that the symptoms of visual stress worsen with prolonged reading and a significant effect at reading normal text is only to be expected after about 10 min.⁵³ This could make clinical testing impractical and Wilkins therefore developed the WRRT which uses small crowded text to induce the symptoms of VS sooner and which can demonstrate an effect of colour in a simple four minute test.⁵⁴

VS seems to lie on a spectrum from mild to highly symptomatic. Large studies investigating the effect of IO with the WRRT show that about one third of those choosing overlays read >5% faster with the overlay whilst 5% of unselected schoolchildren read >25% faster.⁵⁸ Indeed, the spectrum of VS can be characterised, from a performance perspective, as the percentage improvement in WRRT performance with overlays. A low criterion (e.g., >5% improvement at WRRT) is likely to identify everyone with VS but also many without clinically significant VS (high sensitivity but low specificity). A high criterion (e.g., >50% improvement) is likely to miss a significant number of people with symptomatic VS but detect very few who do not have VS (high specificity and low sensitivity). An early tendency to use >5% as a WRRT cut-off will over-diagnose VS⁴² and a recent analysis indicates that >15% is likely to be the most appropriate criterion, at least for children.⁵⁹ A re-analysis of previously reported data on prevalence⁴² using this criterion suggests VS occurs in about 20% of children with dyslexia. This indicates that Irlen's approach, which can detect VS in close to 80% of people with reading difficulties,⁶⁰ over-diagnoses the condition.

The use of IO in diagnosing visual stress has been criticised,⁷ because of the use of "the intervention under evaluation to screen and enrol subjects". The use of a treatment for diagnosis also occurs for other conditions^{61–63} and indeed many conditions are diagnosed purely on the presence of symptoms and exclusion of other causes.⁶⁴ Nonetheless, the present authors agree that improvements need to be made in the diagnosis of VS (see discussion).

This review seeks to address the following research question: "Do individually prescribed coloured filters alleviate symptoms attributed to VS when reading, and improve visual performance?" The selection criteria for the review can be summarised as studies of people diagnosed with VS and using IO or the IC. These criteria are specified in more detail in the next section.

Methods

Eligibility

The eligibility criteria for this review are shown in [Table 1](#).

Information sources

We conducted systematic searches using the following databases: PubMed, ERIC, Cochrane Central Register of Controlled Trials, PubPsych (see [Supplementary material](#)). We supplemented these searches by examining databases of publications held by the authors and other researchers in the

Table 1 Summary of review eligibility criteria.

Inclusion criteria	Exclusion criteria
Participants aged 5 years and over	Participants younger than 5 years
Study population selected using at least one of the following: 1. Questionnaire based rating scales; 2. A pattern glare test; 3. Sustained (>2 week) voluntary use of an overlay; Improvement in performance with an IO.	Study population selected as -Dyslexic; -VS according to Irlen's criteria (which over-diagnose VS, detecting this in up to 80% of people with reading difficulties). ⁶⁰
Studies of the effect of individually prescribed coloured filters on reading performance or symptoms using the only coloured filter system that has been described in the scientific literature and systematically samples human colour space (IO or IC).	Studies using coloured filters that are not individually prescribed or do not systematically sample colour space or have not been described in the scientific literature in detail sufficient for the study to be replicated.
Experimental design: -randomised controlled trial -quasi-experimental study -population-based cross-sectional study -comparative observational study using a comparison group (prospective or retrospective)	Experimental design: -case series without a comparison group -case studies -qualitative studies -non-empirical opinion-pieces

field, and by hand-searching the bibliographies of included studies.

Selection, data extraction, appraisal, and synthesis

A PRISMA flow Chart summarising the review process is in Fig. 1.

One reviewer screened citation information to remove duplicates. Abstracts were screened and irrelevant manuscripts removed. For the remaining manuscripts, the full papers were studied and reviewed by both authors to determine those that should be included. Sections of the review referring to research by one of the review authors was written by a different review author not involved in that work. CASP criteria were used to assess bias.⁶⁵ The principal summary measure is difference in means.

Results

The results of the literature review are summarised in three sections, two relating to research with IO and one to research with the IC.

In the first section, controlled trials using IO are reviewed. Controlled trials have limitations and an over-reliance on controlled trials has been criticised.^{66,67} Indeed Hill, the architect of the randomised controlled trial (RCT), commented that "any belief that the controlled trial is the only way would mean not that the pendulum had swung too far but that it had come right off the hook".⁶⁸ The second section reviews complementary approaches.

Controlled trials using intuitive overlays

Table 2 evaluates, using CASP criteria,⁶⁵ studies of the effect of IO on reading, or related performance, in populations selected as having VS. Controlled trials with IO which applied at least one of the four diagnostic criteria for VS detailed in the introduction and methods sections and which used a different method to assess the effect of IO use are included.

Studies that investigated samples whose sole indicator for VS is reporting an immediate improvement in perception with an overlay are not included because this will over-diagnose VS, selecting about 50% of the population.^{12,51,52,57} The exclusion of these studies (all of which found improved performance with IO)^{12,51,52,69-71} means that several studies often cited as supporting the use of IO are not included in Table 2. Three of the papers cited in Table 2 included studies that were not designed to be clinical trials but rather to assess prevalence of VS.^{12,51,52} These papers each contained several studies which together provide a more holistic investigation of VS and are detailed in the next section; only the experiments that constitute controlled trials are described in Table 2.

It is not possible to mask participants in a trial comparing coloured overlays with a control (e.g., grey), and this represents a risk of bias across studies. Nonetheless, all 10 studies in Table 2 found statistically significant improvements in performance with individually selected IO. Some of the studies used testing with colour in their participant selection process (see above). However, it is notable that the four studies that selected participants in other ways (avoiding testing with colour) also found statistically significant benefits from coloured filters.^{22,43,49,72}

Systematic research using intuitive overlays

There are limitations to research with coloured overlays. Typically, participants are asked a series of questions about symptoms when viewing text. Asking these questions may increase the reporting of symptoms as a result of suggestion, although in the research described below the questions were worded so that there were alternatives to minimise the risk of suggestion. The next stage is to ask participants if coloured overlays reduce their symptoms. Coloured filters will alter the appearance of the page and this may be interpreted by some children as reducing symptoms. This could lead to immediate reports of a reduction in symptoms that, via a placebo effect, leads to improved

Table 2 Summary of controlled trials of intuitive overlays (IO) in populations selected as having VS. Key CASP⁶⁵ critical appraisal criteria for assessing bias are detailed in the columns, with the exception of two CASP criteria: masking (it is not possible to double mask overlay studies) and it is assumed that groups were treated equally as all studies are repeated measures trials. Abbreviations: EE, eye examination; ITT, intention to treat (were all of the participants who entered the trial properly accounted for at its conclusion?); NS, not significant; PGT, pattern glare test; VDS, Visual Discomfort Scale; ViSS, computerised visual stress screener; VST, visual search task; WPM, words per minute; WRRT, Wilkins Rate of Reading Test. *P*-values are two-tailed. Note 1: in these studies the WRRT was carried out as recommended in the test instructions using an ABBA order to control for practice effects.⁵²

Study	Design	Population appropriate?	Interventions appropriate?	Randomised?	Outcomes appropriate?	Groups matched?	ITT?	Results: size of treatment effect?	Statistical significance & precision	Interpretation
Wilkins et al. (1996) ⁵⁴	Case control with repeated measures	Yes. VS indicated by sustained (8 week) use of IO a 15 chose & frequently used IO b 17 chose & infrequently used IO c 6 chose & did not use IO d 39 did not choose IO. No ophthalmic testing.	Prone to placebo effect. IO vs. no overlay	Yes	Yes. WRRT	No	Data from 2 children incomplete & rejected	a 7.2% faster b 1.1% faster c 2.7% slower d 2.0% faster with overlay cf without	a <i>P</i> < 0.01 b NS c NS d NS	IO improved reading performance in group with VS but poor control of placebo effect
Jeanes et al. (1997) ¹² Study 4	Case control with repeated measures (see next section)	Yes. VS indicated by sustained (10 month) voluntary use of IO. Primary school children 11 VS 19 controls No ophthalmic testing	Prone to placebo effect. IO vs. no overlay	Not stated, but Note 1 likely to apply	Yes. WRRT	No	Not stated	VS group read 8% faster with overlay cf without. Control group read 1% slower with overlay cf without	<i>P</i> = 0.022 in VS group. Small sample size.	IO improved reading performance in group with VS but poor control of placebo effect

Table 2 (Continued)

Study	Design	Population appropriate?	Interventions appropriate?	Randomised?	Outcomes appropriate?	Groups matched?	ITT?	Results: size of treatment effect?	Statistical significance & precision	Interpretation
Wilkins and Lewis (1999) ⁵¹ Study 4	Case control with repeated measures (see next section)	Yes. VS indicated by sustained (6–9 months) voluntary use of IO. Children aged 7–11y a 36 chose & used IO b 43 chose & stopped using IO c 55 did not choose IO. Minimal optometrist testing: excluded if not 6/6	Prone to placebo effect. IO vs. no overlay	Yes	Yes. WRRT	No	Not stated	a 10.7% faster b 2% faster c 4% faster with IO cf without	a $P=0.00002$ b $P=0.004$ c $P=0.02$	IO improved reading performance in group with VS but poor control of placebo effect
Lightstone et al. (1999) ⁷³ Study 2	Repeated measures	Yes. VS indicated by symptoms & sustained benefit from IO. 17 children with VS Ophthalmic testing & ophthalmic anomalies treated first.	Moderate control of placebo effect. IO vs. none & control tint vs. none	Yes	Yes. WRRT	Yes (repeated measures)	Yes, all finished	10.2% faster with IO cf without 6.0% faster with control tint cf without	$P<0.05$ $P>0.05$ Small sample size	IO improved reading performance in VS, some control of placebo effect

Table 2 (Continued)

Study	Design	Population appropriate?	Interventions appropriate?	Randomised?	Outcomes appropriate?	Groups matched?	ITT?	Results: size of treatment effect?	Statistical significance & precision	Interpretation
Wilkins et al. (2001) ⁵² Study 3	Case control with repeated measures (see next section)	Yes VS indicated by symptoms & sustained (8 months) benefit from IO. Children. a 136 chose & used IO b 124 chose & stopped using IO. No ophthalmic testing.	Prone to placebo effect. IO vs. no overlay	Note 1	Yes. WRRT	No	Yes, all finished	a 13.3% faster b 2.5% faster with IO cf without	a $P < 0.0001$ b $P < 0.05$	IO improved reading performance in group with VS but poor control of placebo effect
Northway (2003) ⁷⁴	Case control with repeated measures	Yes. VS indicated by sustained (12 weeks) use of IO Dyslexic children in eye clinic. 40 with VS 14 no VS (no overlay selected) 10 no VS (overlay chosen not sustained use) Orthoptic testing & excluded any with orthoptic problems.	Prone to placebo effect. IO vs. no overlay	Note 1	Yes. WRRT & digit reading task	No, but mean age NS different	Yes, all finished	VS group read 10.1% faster with overlay than without. Control groups read 2.4% and 4.4% slower with overlay than without. Similar but stronger effects for digit reading.	$P < 0.01$	IO improved reading performance in group with VS but poor control of placebo effect

Please cite this article in press as: Evans BJW, Allen PM. A systematic review of controlled trials on visual stress using Intuitive Overlays or the Intuitive Colorimeter. *J Optom.* (2016), <http://dx.doi.org/10.1016/j.optom.2016.04.002>

Table 2 (Continued)

Study	Design	Population appropriate?	Interventions appropriate?	Randomised?	Outcomes appropriate?	Groups matched?	ITT?	Results: size of treatment effect?	Statistical significance & precision	Interpretation
Hollis and Allen (2006) ⁴⁹	Case control with repeated measures	Yes. VS indicated by symptoms & PGT. Adults. a 20 with VS b 18 borderline c 20 controls. No ophthalmic testing	Prone to placebo effect. IO vs. no overlay	Note 1	Yes. WRRT	No	Yes, all finished	a 12% faster b 7% faster c 4% slower with overlay cf without.	Change in speed significantly different in VS group cf control group ($P < 0.05$).	IO improved reading performance in group with VS. Moderate control of placebo effect as colour not used in selection.
Singleton and Henderson (2007) ⁴³	Case control with repeated measures	Yes. VS indicated by ViSS. Children. a 9 high VS + dyslexia b 5 high VS + no dyslexia c 13 low VS + dyslexia d 17 low VS + no dyslexia No ophthalmic testing	Moderate control of placebo effect. IO vs. grey overlay	Note 1	Yes, WRRT	Yes, for reading age	Yes, all finished	a + b 17.3% faster c + d 4.1% faster with overlay cf grey. Greatest improvement when VS combined with dyslexia	$P < 0.01$ Small sample size.	IO improved reading performance in group with VS. Moderate/good control of placebo effect as colour not used in selection & control overlay.
Allen et al. (2008) ²²	Case control with repeated measures	Yes. VS indicated by symptoms & PGT. Adult students. 14 with VS 14 controls. No ophthalmic testing	Prone to placebo effect. IO vs. no overlay	Yes	Yes. WRRT & VST	No, but reading rate & accuracy NS different in groups	Yes, all finished	VS group read 20 wpm faster with overlay: control group did not read faster with overlay. No significant effects with search task.	$P < 0.001$ Authors' Fig. 3 shows little overlap between groups. Small sample size.	IO improved reading performance in group with VS. Moderate control of placebo effect as colour not used in selection.
Allen et al. (2010) ⁷² Experiment 1	Case control with repeated measures	Yes. VS indicated by PGT. Adult students. 11 with VS 11 controls. Ophthalmic testing & excluded cases with confounding ophthalmic anomalies or migraine.	Prone to placebo effect. IO vs. no overlay	Note 1	Yes. WRRT	Yes, for age, gender, refractive error.	Yes, all finished	VS group read 15 wpm (10%) faster with overlay: control group 0.5% faster.	$P < 0.001$ Small sample size	IO improved reading performance in group with VS. Moderate control of placebo effect as colour not used in selection.

Please cite this article in press as: Evans BJW, Allen PM. A systematic review of controlled trials on visual stress using Intuitive Overlays or the Intuitive Colorimeter. *J Optom.* (2016), <http://dx.doi.org/10.1016/j.joptom.2016.04.002>

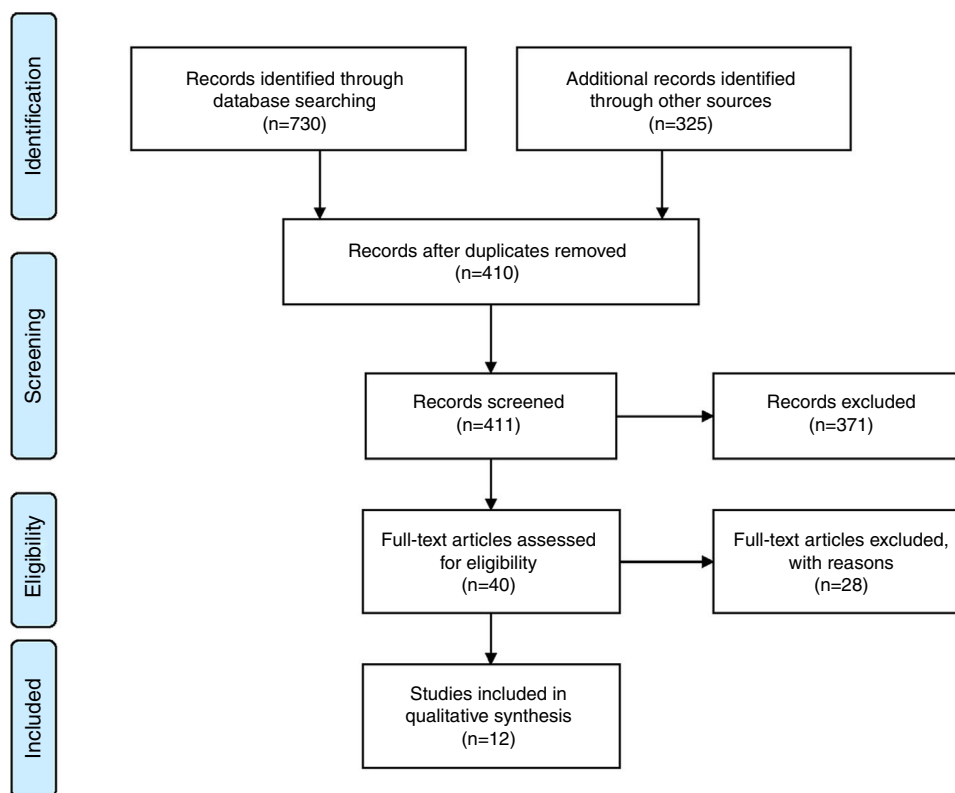


Figure 1 PRISMA flow chart summarising the review process.

performance. Since participants will be aware of the colour they have chosen, then they will be aware that a control colour is different and this limits the ability to control for the placebo effect. Various approaches have been used in attempts to minimise these limitations. In particular, three papers^{12,51,52} have been published which each include several studies investigating different aspects of the effects of IO and which, in each paper, combine to address many of the limitations of overlay studies. The studies within these papers that constitute controlled trials are described above, but these experiments taken out of the context of the other studies in the papers present an incomplete picture. These three papers will now be summarised.

Jeanes et al. (1997)¹²

In Study 1, 152 children aged 5–12 years from two centres were administered a symptom questionnaire and IO test, with 51–54% choosing an overlay. Three months later (Study 2) 75–89% of those given an overlay were still using the overlay and colour choice was retested and found to be reliable. In Study 3, the researchers returned 10 months after the initial testing and 21% of those initially requesting an overlay were still using this.

In Study 4, the 14 children who persisted in using an IO were found to read significantly more quickly with the overlay than without. In contrast, those who did not persist with the overlay read at an almost identical mean speed with and without the overlay. The authors noted that the children who read more rapidly with their overlay might have done so because they became familiar with the use of the overlay. They investigated this in Study 5 by testing a completely

new sample of 77 children to see whether performance at the WRRT was predictive of those who would still be using a coloured overlay one school term later. Twenty percent of those tested persisted in the use of an overlay. Those who persisted in using an overlay had read significantly more quickly with the overlay than without when tested at the start of the school term. In contrast, those who did not persist with an overlay had not read significantly more quickly with the overlay than without.

It is possible that the benefit from IO is attributable to reduced contrast. Study 6 investigated this using a grey overlay and showed that grey does not produce the benefit demonstrated with individually selected colour. Participants read fastest with their preferred colour (74.1) and this was significantly faster than with the clear (65.8) and grey (66.3) overlays, but not significantly faster than with a complementary colour (69.7), possibly owing to the modest sample size. Study 7 investigated a new method of group testing with coloured paper, but this was not effective. This may be because only 6 colours were used and later research indicates that this is unlikely to be enough.^{17,71}

In summary, these 7 studies indicate that contrast reduction is not the mechanism for the benefit from IO and demonstrate that it is the children who read significantly faster with an IO who are likely to continue to use it.

Wilkins and Lewis (1999)⁵¹

In Study 1, the authors attempted to control for the placebo effect by comparing WRRT performance with a chosen overlay with a grey overlay that was labelled “prototype” and given a cover story to generate a placebo effect. The

children read significantly more quickly with their chosen overlay than with the placebo. In Studies 2–3, the authors showed that the preferred overlay was associated with improved performance at a new test of “texture segregation”, when of suitable design (Study 3), as well as improvement in WRRT thereby suggesting that some of the improvement in reading speed is perceptual in origin.

Studies 1–3 were limited by evaluating small samples (22–34) of children who were referred to a sensory support service. Study 4 evaluated 133 children who were unselected other than having normal visual acuity. Twenty-seven percent of the sample chose and persisted in using an overlay. Improvement at the WRRT and the texture segregation task with the overlay after several months was significant only for the sustained users.

This study replicates the earlier¹² finding that the children who demonstrate sustained use of an overlay are those that also exhibit a significant improvement in performance with the overlay both before and after experience of its use. The findings of Study 1 indicate that the benefits are unlikely to be attributable to placebo effects.

Wilkins et al. (2001)⁵²

Study 1 evaluated 89 unselected children with IO and the WRRT on two sessions. The choice of colour was more repeatable than predicted by chance, although this could be explained by children remembering their initial choice. Those who were most consistent showed a tendency, which just reached significance, to manifest the greatest improvement in WRRT performance.

Study 3 investigated a new sample of 426 unselected children in 12 schools and investigated symptoms, WRRT performance, and sustained IO use nine months after IO testing. Thirty-one percent of the initial sample were still using an overlay after 9 months and these showed a significant tendency to be (1) the most symptomatic and (2) those who showed the greatest WRRT improvement on initial testing. Of the total sample, 5% read more than 25% more quickly with an overlay.

Although this paper cannot completely rule out placebo effects, the fact that colour was helpful but not grey (Study 2) and the sustained use for 9 months (Study 3) are suggestive of effects beyond those of a placebo.

Controlled trials using the intuitive colorimeter (IC) and Precision Tinted Lenses

Table 3 evaluates all controlled trials of participants with VS using the IC. All studies found significant improvement of symptoms or performance from colour prescribed with the IC. All three studies and others^{16,17} support the notion that different individuals need different colours and the colour at least in some cases needs to be prescribed with a precision that is unlikely to be attributable to colour memory.¹⁶

The IC allows for placebo effects to be controlled because when colours are slowly adjusted in the IC colour adaptation causes participants to be unaware of the exact colour they are viewing. Thus, two colours can be selected which, according to the participant’s reports, alleviate their symptoms to an optimal and sub-optimal degree without the participant being able subsequently to differentiate the

appearance of each colour.⁷⁶ The disadvantage of such a study is that the control tints are unlikely to be inert but rather are similar in colour to the optimal tint. If the two colours are made so similar that they are virtually identical then, although there will be a perfect placebo control, it would seem unlikely that the optimal colour will be sufficiently different to the sub-optimal colour for a difference in therapeutic effect to be evident. The research study using this approach included checks which confirmed that the trial was double-masked.⁷⁶

The ability to detect a therapeutic effect can be improved by using symptom diaries, but this increases the risk of participant dropout, especially in a crossover study. This was a limitation of the research, since symptom diaries were completed for only 37 of the 68 participants who started the study (attrition bias). Also, the study was carried out before the WRRT was invented and therefore used a reading test that lacked the design characteristics required to show an immediate benefit from coloured filters in VS.^{53,54} This 20 year old study should be repeated with modern selection criteria,⁷⁵ a larger sample, an appropriate reading test,^{53,54,58} and a proper implementation of the intention-to-treat principle.⁷⁷ It is, however, notable that there were 7 participants who individually had significantly fewer symptoms with one pair of coloured lenses and in every case this was the lenses with the optimal colour, despite the fact that participants remained unaware throughout the study as to which pair contained the optimal colour.⁷⁶

Discussion

One factor contributing to conflicts in the literature is the heterogeneity of populations recruited to the various studies. IO¹¹ and Cerium Precision Tinted Lenses⁷⁸ were developed specifically to alleviate VS. There are three types of studies that are not included in this review because their selection criteria are unlikely to select samples of people with VS. First, in some studies recruitment strategies are based on participants experiencing reading difficulties or dyslexia,^{45,46} with only a relatively small percentage of these participants likely to experience VS. Second, some studies have investigated participants who have been prescribed coloured filters using the Irlen method, whose criteria are poorly stated and which can “detect” VS in close to 80% of people with reading difficulties.⁶⁰ The present review also excludes studies where the sole selection criterion is that participants reported a preference for a coloured overlay, without any assessment of whether it improves performance or is used for a sustained period. This will over-diagnose VS, selecting about 50% of the population.^{12,51,52,54,57} There are a multitude of reasons why, on initial testing with overlays, children might choose a colour (see Fig. 2).

Requiring a trial with an overlay or an improvement in visual performance with the overlay will reduce the likelihood of a non-clinical reason for the improvement (dark grey panels in Fig. 2). Although the routine optometric examination gives little indication of visual stress,⁸ an eye examination should exclude clinical factors in Fig 2. Many of the symptoms experienced in visual stress are also typical in cases of uncorrected refractive error and accommodation-vergence anomalies and may disappear when these are

Table 3 Summary of controlled trials using intuitive colorimeter (IC) or Cerium Precision Tinted Lenses prescribed with the intuitive colorimeter (ICPTL) in populations selected as having VS. Abbreviations: ITT, intention to treat (were all of the participants who entered the trial properly accounted for at its conclusion?); NS, not significant; PGT, pattern glare test; VPPI, Visual Processing Problems Inventory (instrument with 24 questions relating to symptoms of VS); VST, visual search task; WPM, words per minute; WRRT, Wilkins Rate of Reading Test. Note 1: in these studies the WRRT was carried out as in recommended in the test instructions using an ABBA order to control for practice effects.⁵²

Study	Design	Population appropriate?	Interventions appropriate?	Randomised?	Outcomes appropriate?	Masked?	Groups matched?	Groups treated equally?	ITT?	Results: size of treatment effect?	Statistical significance & precision	Interpretation
Wilkins et al. (1994) ⁷⁶	Cross-over trial	Yes. VS indicated by symptoms or difficulties when reading and sustained (3 week) benefit from overlay.	Yes, IC colour vs. similar colour. Good control of placebo effect but control tint sub-optimal rather than inert, reducing chance of significant result	Yes	Symptoms assessed thoroughly with diaries. Reading assessed with test now known to be inappropriate. ^{53,54,58}	Yes, double-masked	Yes (cross-over)	Yes (cross-over)	No. 68 started the trial but only analysed the 37 who completed	Symptom-free on 71% of days with optimal colour vs. 66% of days with sub-optimal colour. Effect on reading NS	Overall $P=0.002$. Individual data from symptom diaries shows 7 individuals had significantly fewer symptoms with one pair of glasses, all with the optimal colour.	ICPTL improve symptoms in some individuals with VS, but overall results limited by attrition. Good control of placebo effect
Lightstone et al. (1999) ⁷³ Study 2	Repeated measures	Yes. VS indicated by symptoms & sustained benefit from overlay. 17 children with VS Ophthalmic testing & had treated any ophthalmic anomalies.	Good control of placebo effect. ICPTL vs. none & control tint vs. none	Yes	Yes. WRRT	Uncertain. (unclear if participants could identify PTL from control tints)	Yes (repeated measures)	Assumed yes (repeated measures design)	Yes, all finished	12.7% faster with ICPTL cf none. 6.0% faster with control tint cf none. 6.4% faster with ICPTL cf control tint.	$P < 0.05$ $P > 0.05$ $P = 0.03$ Small sample size	ICPTL improve symptoms in VS. Moderate control of placebo effect.
Singleton and Trotter (2005) ⁴⁴	Case control with repeated measures	Yes. VS indicated by VPPI. 20 adult students. 5 high VS + dyslexia 5 high VS + no dyslexia 5 low VS + dyslexia 5 low VS + no dyslexia No ophthalmic testing	Prone to placebo effect. IC optimal colour vs. IC white light.	No, but counter-balanced	Yes. WRRT	No	Yes, for reading accuracy	Assumed yes (repeated measures design)	Not stated, but implied all finished	High VS + dyslexia group 16% faster with optimal colour. Other groups 3-4% faster with optimal colour.	$P = 0.046$ NS Small sample size	Colour selected in IC improves reading performance in VS but poor control of placebo effect.

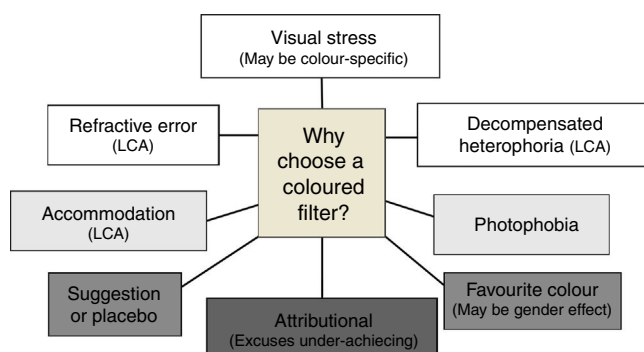


Figure 2 Schematic diagram to illustrate potential reasons why children might choose a coloured overlay on first testing.

corrected. Therefore, it is essential to conduct a full assessment of refractive status and binocular vision and to treat any anomalies conventionally before considering treatment with coloured filters. That said, anecdotal observations suggest that visual stress may exacerbate difficulties with accommodation and vergence and that these difficulties can sometimes be reduced when coloured filters are used. A positive result to a pattern glare test^{48,75,79} will further improve confidence in the diagnosis of VS.

Many studies in this review have only a limited control of the placebo effect. Colour adaptation means that the intuitive colorimeter can be used for a double-masked trial⁷⁶ and a large RCT with this instrument is a priority for future research. Colour adaptation is also likely to explain why a person's optimal colour of overlay and lens will differ.⁷³ These potential confounders are likely to increase the chance of a study finding that filters are helpful. In contrast, the tendency to over-diagnose VS in these studies⁵⁹ reduces the likelihood of a positive result.

The diagnosis of VS needs further research. Few diagnostic processes have perfect sensitivity and specificity and inevitably in clinical practice there will be some individuals who are inappropriately diagnosed with a condition. This is clearly undesirable in clinical practice and will also reduce the statistical power of research studies. The authors have recently conducted a Dephi analysis which demonstrates some concordance in key tests in the diagnosis of VS but also a need for further research.⁷⁵

Many of the papers in our review involved participants who had not received an eye examination to exclude other causes of symptoms. Although this diagnosis of exclusion is recommended for clinical practice,^{80,81} it is less important for research studies to apply this criterion because ophthalmic factors only infrequently account for symptoms of VS.^{8,55–57}

In a recent review by Wilkins, a possible mechanism for VS has been elucidated that is related to a cortical hyperexcitability.²⁶

Although beyond the scope of this review, the evidence for other visual factors (e.g., binocular instability) co-occurring with dyslexia is also modest,⁸¹ with a recent large study finding ophthalmic deficits in one in five children with severe reading impairment.^{82,83} Classroom learning requires clear and sustained vision and undetected visual problems may add to the burden that children with dyslexia or other learning difficulties experience. It would seem a sensible

precaution for children who struggle at school to have an eye examination to exclude visual problems.^{84–88}

The psychological effect of using coloured filters deserves consideration. In some children, they may play a positive role in helping them attribute underachievement to a condition rather than a lack of intelligence, but for others coloured filters may draw unwelcome attention. It is important for practitioners to appreciate that any interventions carry a cost to the patient and family in terms of expense, time, and raised expectations. For interventions where the evidence for the benefit is weak (e.g., coloured filters, small refractive errors, vision therapy) then the practitioner should be particularly careful not to overstate the case for intervening.

Despite the limitations of the research detailed above, the balance of evidence suggests that coloured filters can alleviate symptoms or improve performance in people who suffer from VS. The quality of evidence is less than would be required for new surgical or medical interventions, but coloured filters are a safer form of intervention. Until larger trials are completed, the authors recommend that before coloured lenses are prescribed practitioners should exclude other ophthalmic problems and assess the effect of overlays with the WRRT and a trial with overlays.

Contributors' statement

Professor Evans and Professor Allen conceptualised and designed the study, performed the literature searches, drafted the initial manuscript, and approved the final manuscript as submitted.

Funding source

No external funding for this manuscript.

Financial disclosure

The authors have no financial interests in any coloured filter systems used to treat visual stress.

Conflicts of interest

Professor Evans has received honoraria for lectures and has acted as an expert witness on this topic. He is an unpaid committee member and secretary of the not-for-profit Society for Coloured Lens Prescribers (www.s4clp.org).

Appendix A. Supplementary data

Supplementary data associated with this article can be found, in the online version, at <http://dx.doi.org/10.1016/j.optom.2016.04.002>.

References

1. Anon. Foreign influence. *Life Mag.* 1987;Fall:29–35.
2. Critchley M. *Developmental Dyslexia*. London: Whitefriars Press; 1964.

3. Meares O. Figure/ground brightness contrast, and reading disabilities. *Vis Lang*. 1980;14:13–29.
4. Irlen H. Successful treatment of learning difficulties. In: *Paper presented at Annual Convention of the American Psychological Association*. 1983.
5. Uccula A, Enna M, Mulatti C. Colors, colored overlays, and reading skills. *Front Psychol*. 2014;5.
6. Henderson LM, Taylor RH, Barrett B, et al. Editorials: treating reading difficulties with colour. *Br Med J*. 2014;349:g5160–g5260.
7. Albon E, Adi Y, Hyde C. *The Effectiveness and Cost-Effectiveness of Coloured Filters for Reading Disability: A Systematic Review*; 2008.
8. Monger L, Wilkins A, Allen P. Identifying visual stress during a routine eye examination. *J Optom*. 2014.
9. Joyce KE, Beyer F, Thomson RG, et al. A systematic review of the effectiveness of treatments in altering the natural history of intermittent exotropia. *Br J Ophthalmol*. 2015;99:440–450.
10. Kruk R, Sumbler K, Willows D. Visual processing characteristics of children with Meares-Irlen syndrome. *Ophthalmic Physiol Opt*. 2008;28:35–46.
11. Wilkins A. Overlays for classroom and optometric use. *Ophthalmic Physiol Opt*. 1994;14:97–99.
12. Jeanes R, Busby A, Martin J, et al. Prolonged use of coloured overlays for classroom reading. *Br J Psychol*. 1997;88:531–548.
13. Wilkins AJ, Nimmo-Smith I, Jansons JE. Colorimeter for the intuitive manipulation of hue and saturation and its role in the study of perceptual distortion. *Ophthalmic Physiol Opt*. 1992;12:381–385.
14. Wilkins AJ, Sihra N. A colorizer for use in determining an optimal ophthalmic tint. *Col Res Appl*. 2000;26:246–253.
15. Waldie M, Wilkins A. How big does a coloured overlay have to be? *Ophthalmic Physiol Opt*. 2004;24:57–60.
16. Wilkins AJ, Sihra N, Myers A. Increasing reading speed by using colours: issues concerning reliability and specificity, and their theoretical and practical implications. *Perception*. 2005;34:109–120.
17. Wilkins A, Sihra N, Nimmo-Smith I. How precise do precision tints have to be and how many are necessary? *Ophthalmic Physiol Opt*. 2005;25:269–276.
18. Scheiman M, Blaskey P, Ciner EB, et al. Vision characteristics of individuals identified as Irlen filter candidates. *J Am Optom Assoc*. 1990;61:600–605.
19. Evans BJW. Case reports: the need for optometric investigation in suspected Meares-Irlen syndrome or visual stress. *Ophthalmic Physiol Opt*. 2005;25:363–370.
20. Evans BJW. Coloured filters and dyslexia: what's in a name? *Dyslexia Rev*. 1997;9:18–19.
21. Wilkins AJ. *Visual Stress*. Oxford: Oxford University Press; 1995.
22. Allen PM, Gilchrist JM, Hollis J. Use of visual search in the assessment of pattern-related visual stress (PRVS) and its alleviation by coloured filters. *Invest Ophthalmol Vis Sci*. 2008.
23. Abd Manan F, Jenkins TCA, Collinge AJ. The effect of clinical visual stress on stereoacuity measured with the TNO test. *Malays J Med Sci*. 2001;8:25–31.
24. Mon-Williams M, Plooy A, Burgess-Limerick R, et al. Gaze angle: a possible mechanism of visual stress in virtual reality headsets. *Ergonomics*. 1998;41:280–285.
25. Yekta AA, Pickwell LD, Jenkins TCA. Binocular vision without visual stress. *Optom Vis Sci*. 1989;66:815–817.
26. Wilkins A. A physiological basis for visual discomfort: application in lighting design. *Light Res Technol*. 2016;48:44–54.
27. Wilkins A. Reading and visual discomfort. In: Willows DM, Kruk RS, Corcos E, eds. *Visual Process in Reading and Reading Disabilities*. First ed. Hillsdale, New Jersey: Lawrence Erlbaum Associates; 1993:435–456.
28. Wilkins A, Nimmo-Smith I, Tait A, et al. A neurological basis for visual discomfort. *Brain*. 1984;107:989–1017.
29. Xiao Y, Wang Y, Felleman DJ. A spatially organized representation of colour in macaque cortical area V2. *Nature*. 2003;421:535–539.
30. Wilkins AJ. *Reading Through Colour. How Coloured Filters Can Reduce Reading Difficulty, Eye Strain and Headaches*. Chichester: John Wiley and Sons; 2003.
31. Haigh SM, Cooper NR, Wilkins AJ. Cortical excitability and the shape of the haemodynamic response. *Neuroimage*. 2015;111:379–384.
32. Penacchio O, Wilkins AJ. Visual discomfort and the spatial distribution of Fourier energy. *Vis Res*. 2015;108:1–7.
33. Haigh SM, Barningham L, Berntsen M, et al. Discomfort and the cortical haemodynamic response to coloured gratings. *Vis Res*. 2013;89:47–53.
34. Haigh SM, Jaschinski W, Allen PM, et al. Accommodation to uncomfortable patterns. *Perception*. 2013;42:208–222.
35. Coutts L, Cooper C, Elwell C, et al. Time course of the hemodynamic response to visual stimulation in migraine, measured using near infrared spectroscopy. *Cephalalgia*. 2012;32:621–629.
36. Huang J, Zong X, Wilkins A, et al. fMRI evidence that precision ophthalmic tints reduce cortical hyperactivation in migraine. *Cephalalgia*. 2011;31:925–936.
37. Chouinard B, Zhou C, Hrybouski S, et al. A functional neuroimaging case study of Meares-Irlen Syndrome/Visual Stress (MISViS). *Brain Topogr*. 2012;25:293–307.
38. Riddell PM, Wilkins A, Hainline L. The effect of colored lenses on the visual evoked response in children with visual stress. *Optom Vis Sci*. 2006;83:299–305.
39. Conlon E, Lovegrove W, Hine T, et al. The effects of visual discomfort and pattern structure on visual search. *Perception*. 1998;27:21–33.
40. Conlon E, Lovegrove W, Barker S, et al. Visual discomfort: the influence of spatial frequency. *Perception*. 2001;30:571–581.
41. Rose J. *Identifying and Teaching Children and Young People with Dyslexia and Literacy Difficulties*. DCSF; 2009.
42. Kriss I, Evans BJW. The relationship between dyslexia and Meares-Irlen Syndrome. *J Res Read*. 2005;28:350–364.
43. Singleton C, Henderson LM. Computerized screening for visual stress in children with dyslexia. *Dyslexia*. 2007;13:130–151.
44. Singleton C, Trotter S. Visual stress in adults with and without dyslexia. *J Res Read*. 2005;28:365–378.
45. Henderson LM, Tsogka N, Snowling MJ. Questioning the benefits that coloured overlays can have for reading in students with and without dyslexia. *J Res Spec Educ Needs*. 2012;13:57–65.
46. Menacker S, Breton ME, Breton ML, et al. Do tinted lenses improve the reading performance of dyslexic children? *Arch Ophthalmol*. 1993;111:213–218.
47. Conlon EG, Lovegrove WJ, Chekaluk E, et al. Measuring visual discomfort. *Vis Cognit*. 1999;6:637–663.
48. Evans BJW, Stevenson SJ. The Pattern Glare Test: a review and determination of normative values. *Ophthalmic Physiol Opt*. 2008;28:295–309.
49. Hollis J, Allen PM. Screening for Meares-Irlen sensitivity in adults: can assessment methods predict changes in reading speed? *Ophthalmic Physiol Opt*. 2006;26:566–571.
50. Allen PM, Dedi S, Kumar D, et al. Accommodation, pattern glare, and coloured overlays. *Perception*. 2012;41:1458–1467.
51. Wilkins AJ, Lewis E. Coloured overlays, text and texture. *Perception*. 1999;28:641–650.
52. Wilkins AJ, Lewis E, Smith F, et al. Coloured overlays and their benefit for reading. *J Res Read*. 2001;24:41–64.
53. Tyrrell R, Holland K, Dennis D, et al. Coloured overlays, visual discomfort, visual search and classroom reading. *J Res Read*. 1995;18:10–23.
54. Wilkins AJ, Jeanes RJ, Pumfrey PD, et al. Rate of Reading Test: its reliability, and its validity in the assessment of the effects of coloured overlays. *Ophthalmic Physiol Opt*. 1996;16:491–497.

55. Evans BJW, Busby A, Jeanes R, et al. Optometric correlates of Meares-Irlen Syndrome: a matched group study. *Ophthalm Physiol Opt.* 1995;15:481–487.
56. Evans BJW, Wilkins AJ, Brown J, et al. A preliminary investigation into the aetiology of Meares-Irlen Syndrome. *Ophthalm Physiol Opt.* 1996;16:286–296.
57. Scott JC, McWhinnie H, Taylor L, et al. Coloured overlays in schools: orthoptic and optometric findings. *Ophthalm Physiol Opt.* 2002;22:156–165.
58. Wilkins AJ. Coloured overlays and their effects on reading speed: a review. *Ophthalm Physiol Opt.* 2002;22:448–454.
59. Wilkins AJ, Allen PM, Monger LJ, et al. Visual stress and dyslexia for the practising optometrist. *Optom Pract.* 2016;17:103–112.
60. Ritchie SJ, Della SS, McIntosh RD. Irlen colored overlays do not alleviate reading difficulties. *Pediatrics.* 2011;128:e932–e938.
61. McKeon A, Matsumoto JY, Bower JH, et al. The spectrum of disorders presenting as adult-onset focal lower extremity dystonia. *Parkinsonism Relat Disord.* 2008;14:613–619.
62. Spira A. Diving and marine medicine review part II: diving diseases. *J Travel Med.* 1999;6:180–198.
63. Cianci P, Slade JB Jr. Delayed treatment of decompression sickness with short, no-air-break tables: review of 140 cases. *Aviat Space Environ Med.* 2006;77:1003–1008.
64. International Headache Society. *The International Classification of Headache Disorders.* vol. 24 (Suppl. 1), Second ed. Cephalalgia; 2004:1–151.
65. CASP 2014. CASP checklists. www.casp-uk.net. <http://www.casp-uk.net/#!/casp-tools-checklists/> (accessed 30.10.15).
66. Nanivadekar AS. The penumbra of randomized control trials. *Perspect Clin Res.* 2013;4:157–159.
67. Rawlins M. De testimonio: on the evidence for decisions about the use of therapeutic interventions. *Lancet.* 2008;372:2152–2161.
68. Hill AB. Reflections on controlled trial. *Ann Rheum Dis.* 1966;25:107–113.
69. Bouldoukian J, Wilkins AJ, Evans BJW. Randomised controlled trial of the effect of coloured overlays on the rate of reading of people with specific learning difficulties. *Ophthalm Physiol Opt.* 2002;22:55–60.
70. Evans BJW, Joseph F. The effect of coloured filters on the rate of reading in an adult student population. *Ophthalm Physiol Opt.* 2002;22:535–545.
71. Smith L, Wilkins A. How many colours are necessary to increase the reading speed of children with visual stress? A comparison of two systems. *J Res Read.* 2007;30:332–343.
72. Allen PM, Hussain A, Usherwood C, et al. Pattern-related visual stress, chromaticity, and accommodation. *Invest Ophthalmol Vis Sci.* 2010;51:6843–6849.
73. Lightstone A, Lightstone T, Wilkins A. Both coloured overlays and coloured lenses can improve reading fluency, but their optimal chromaticities differ. *Ophthalm Physiol Opt.* 1999;19:279–285.
74. Northway N. Predicting the continued use of overlays in school children – a comparison of the Developmental Eye Movement test and the Rate of Reading test. *Ophthalm Physiol Opt.* 2003;23:457–464.
75. Evans BJW, Allen PM, Wilkins AJ. A Delphi study to develop practical diagnostic guidelines for visual stress (pattern-related visual stress). *J Optom* (submitted).
76. Wilkins AJ, Evans BJW, Brown J, et al. Double-masked placebo controlled trial of precision spectral filters in children who use coloured overlays. *Ophthalm Physiol Opt.* 1994;14:365–370.
77. White IR, Horton NJ, Carpenter J, et al. Strategy for intention to treat analysis in randomised trials with missing outcome data. *Br Med J.* 2011;342:d40.
78. Wilkins A, Milroy R, Nimmo-Smith I, et al. Preliminary observations concerning treatment of visual discomfort and associated perceptual distortion. *Ophthalm Physiol Opt.* 1992;12:257–263.
79. Monger LJ, Wilkins AJ, Allen PM. Pattern glare: the effects of contrast and color. *Front Psychol.* 2015;6:1651.
80. Lightstone A, Evans BJW. A new protocol for the optometric management of patients with reading difficulties. *Ophthalm Physiol Opt.* 1995;15:507–512.
81. Allen PM, Evans BJW, Wilkins AJ. *Vision and Reading Difficulties.* London: Ten Alps; 2010.
82. Creavin AL, Lingam R, Steer C, et al. Ophthalmic abnormalities and reading impairment. *Pediatrics.* 2015.
83. Evans BJ, Allen PM, Wilkins AJ. Vision is relevant to reading. *Pediatrics.* 2015. <http://pediatrics.aappublications.org/content/135/6/1057.comments#vision-is-relevant-to-reading> (accessed 06.12.15).
84. Evans BJW, Drasdo N, Richards IL. Investigation of accommodative and binocular function in dyslexia. *Ophthalm Physiol Opt.* 1994;14:5–19.
85. Kapoula Z, Bucci MP, Jurion F, et al. Evidence for frequent divergence impairment in French dyslexic children: deficit of convergence relaxation or of divergence per se? *Graefes Arch Clin Exp Ophthalmol.* 2007;245:931–936.
86. Palomo-Alvarez C, Puell MC. Accommodative function in school children with reading difficulties. *Graefes Arch Clin Exp Ophthalmol.* 2008;246:1769–1774.
87. Dusek WA, Pierscionek BK, McClelland JF. An evaluation of clinical treatment of convergence insufficiency for children with reading difficulties. *BMC Ophthalmol.* 2011;11:21.
88. Quaid P, Simpson T. Association between reading speed, cycloplegic refractive error, and oculomotor function in reading disabled children vs. controls. *Graefes Arch Clin Exp Ophthalmol.* 2013;251:169–187.